

📍 16th Arrondissement

A Gleaming Vista

🛏 1 🪑 1 👥 4 🏠 496 sq.ft



Key features

- 1 bedrooms
- 1 bathrooms
- Sleeps 4
- Balcony
- Metro stations nearby
- Tenth-floor view of Eiffel tower

Bedrooms

- Bedroom 1 - Queen-size bed; red velvet chairs, antique sideboard, wall-mounted flat-screen TV

Bathrooms

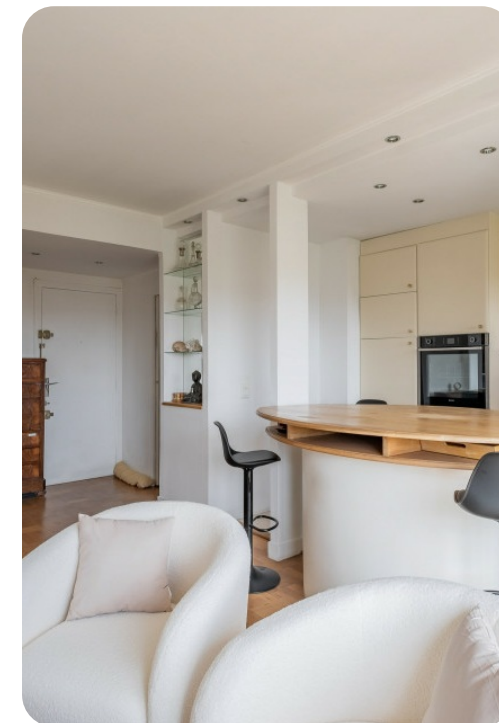
- Bathroom 1 - Single vanity and bathtub/shower combination (en-suite bathroom)

Living area

- Open-plan living area
- Large glass doors
- Sofa (which can be converted to a double bed) and two armchairs
- Antique desk sits next to a shelf filled with books
- Flat-screen TV, resting on a shelf opposite the sofa

Outdoor area

- Balcony with a set of table and chairs and views of the Eiffel Tower



Kitchen and dining area

- Large oval breakfast bar surrounded by stools
- Kitchen benefits greatly from a window providing a view of the incredible cityscape beyond
- Spacious and fully equipped with all the necessary amenities
- Perfect for both casual and formal dining
- Fully-equipped kitchen (dishwasher, fridge, oven, freezer, microwave, toaster, kettle and utensils)

General

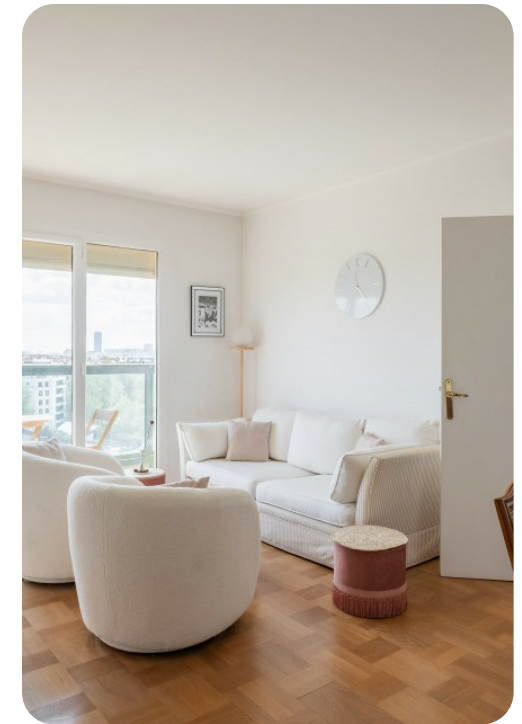
- Complimentary wifi
- Bedding and towels included
- Central heating
- Children welcome
- Elevator

Laundry facilities

- Washing machine
- Iron and ironing board

Services (included)

- On-site greeters upon arrival
- Expert professional cleaning



Transport

Metro station

- Porte de Saint-Cloud - 0.2 miles | 5 minute walk

Train station

- Issy Val de Seine - 0.7 miles | 16 minute walk

Important to know

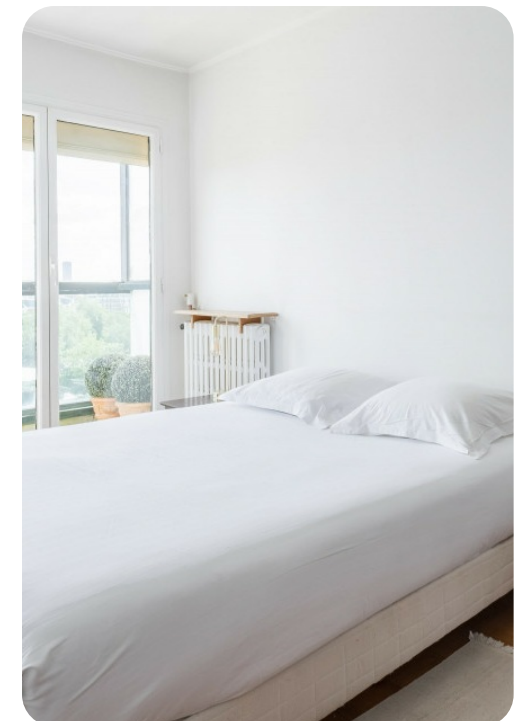
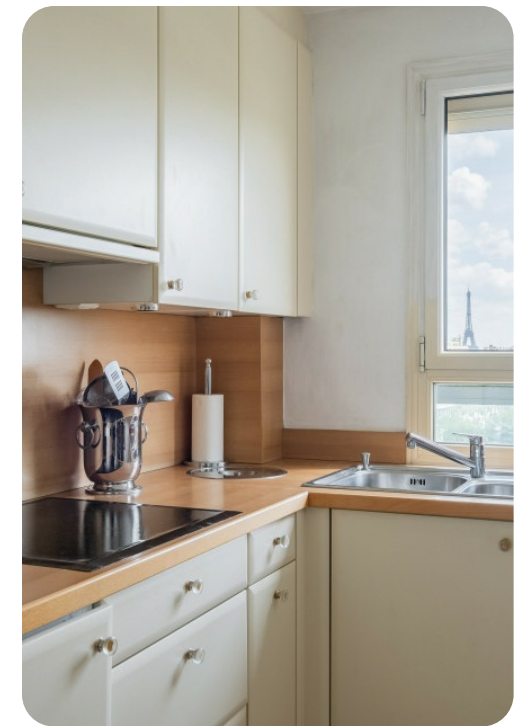
- No smoking, pets or parties.
- The apartment is located on the tenth floor and is accessible by a lift.
- Please note, the TV in the living room only features TNT channels, while the TV in the bedroom features all channels.
- Although we always endeavour for accuracy, there may be rare occasions where the listing photography and description do not provide an exact representation of the home's amenities.?

Paris

Each of our elegant vacation rentals is situated in the heart of Paris, near all major attractions. Our homes are within walking distance or a short metro ride from cultural landmarks, shopping areas, caf  s, and restaurants.

16th arrondissement

The 16th arrondissement is to Paris what the Upper East Side is to New York, a truly affluent and very chic and sought after area of this amazing city. The 16th is home to some of Paris's most wonderful museums like the Marmottan, Guimet or its own Museum of Modern art. The 16th arrondissement is also home to Roland Garros, host of the French Open tennis tournament. This arrondissement is slow-paced and best for ambling about; discovering places like le Palais du Trocad  ro or Jardin d'Acclimation, home to the world's oldest operating amusement park. This arrondissement is also where you will find the Louis Vuitton Foundation and Bois de Boulogne.



Places of interest

Eiffel Tower

Distance: 1.6 miles | 30-minute walk | 25-minutes via metro

Nearest Metro Station: Champ de Mars / Tour Eiffel

The Eiffel Tower, an iconic symbol of Paris and France, was completed in 1889 for the World's Fair. Standing at 1,083 feet (330 meters), it was the tallest man-made structure in the world until 1930. Designed by Gustave Eiffel, this iron lattice tower attracts millions of visitors each year.

Les Invalides

Distance: 0.9 miles | 25-minute walk | 25-minutes via metro

Nearest Metro Station: Varenne

Les Invalides is a grand complex in Paris, originally built in the 17th century by Louis XIV as a hospital and home for wounded soldiers. The site is renowned for its stunning golden dome, which houses the tomb of Napoleon Bonaparte. Today, Les Invalides includes military museums, a veterans' hospital, and St. Louis Cathedral.

Musée d'Orsay

Distance: 1.8 miles | 40-minute walk | 20-minutes via metro

Nearest Metro Station: Solférino

The Musée d'Orsay is a world-famous museum in Paris, housed in a former Beaux-Arts railway station built for the 1900 World's Fair. Located on the banks of the Seine, it is renowned for its extensive collection of 19th- and early 20th-century art, including masterpieces by artists like Monet, Van Gogh, and Degas.

Rodin Museum

Distance: 1.2 miles | 30-minute walk | 25-minutes via metro

Nearest Metro Station: Varenne

The Rodin Museum in Paris is dedicated to the works of the famous French sculptor Auguste Rodin. Housed in the elegant Hôtel Biron, an 18th-century mansion surrounded by beautiful gardens, the museum showcases many of Rodin's masterpieces, including "The Thinker," "The Kiss," and "The Gates of Hell."

Champs-Élysées

Distance: 1.8 mile | 10-minute drive | 30-minutes via metro

Nearest Metro Station: Champs-Élysées - Clemenceau

The Champs-Élysées is one of the most famous avenues in the world, stretching 1.2 miles through the heart of Paris. Known for its elegant tree-lined sidewalks, luxury shops, theaters, and cafés, it connects the Arc de Triomphe to the Place de la Concorde. The avenue is a symbol of Parisian grandeur,



hosting major events like the Bastille Day parade and the finish of the Tour de France.

Louvre museum

Distance: 2.6 miles | 20-minute drive | 30-minutes via metro

Nearest Metro Station: Palais Royal - Musée du Louvre

The Louvre Museum, located in Paris, is the world's largest and most visited art museum. Originally a royal palace, it was transformed into a public museum during the French Revolution. The Louvre's vast collection spans thousands of years and includes masterpieces such as Leonardo da Vinci's "Mona Lisa," the ancient Greek statue "Venus de Milo," and Eugène Delacroix's "Liberty Leading the People."

Arc de Triomphe

Distance: 3.9 miles | 25-minute drive | 25-minutes via metro

Nearest Metro Station: Charles de Gaulle - Étoile

The Arc de Triomphe is a monumental arch located at the top of the Champs-Élysées in Paris. Commissioned by Napoleon Bonaparte in 1806 to honor his army's victories, it stands 164 feet (50 meters) high and 148 feet (45 meters) wide. The arch is adorned with intricate sculptures and reliefs depicting scenes from French military history. Beneath it lies the Tomb of the Unknown Soldier from World War I, and the monument offers panoramic views of Paris from its observation deck.

Paris Charles de Gaulle Airport

Distance: 23.5 miles | 45-minute drive | 65-minutes via metro

Nearest Metro Station: Aéroport Charles de Gaulle 1

Paris Charles de Gaulle Airport, commonly known as CDG, is France's largest and busiest international airport, serving as a major gateway to Paris. Located approximately 25 kilometers (16 miles) northeast of the city center, it is named after the French leader and founder of the Fifth Republic, Charles de Gaulle.

License number: 7511613978533

