

📍 Chelsea

Chelsea Bridge Wharf

🛏️ 2 🚿 2 👥 4 🏠 901 sq.ft



Key Features

- 2 bedrooms
 - 2 bathrooms
 - Sleeps 4
 - Modern interiors
 - Balcony with riverside view
 - Close to Battersea park
-

Bedrooms

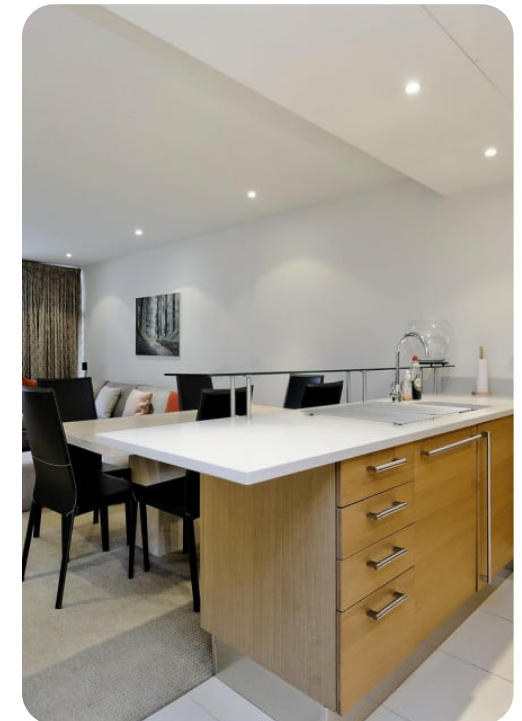
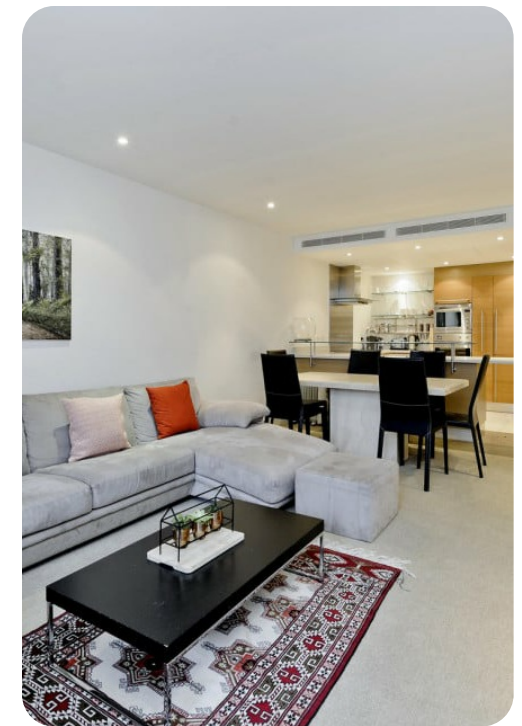
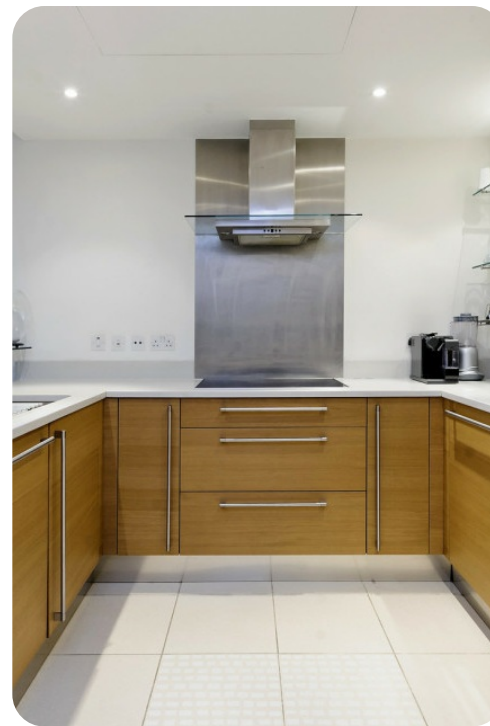
- Bedroom 1: Queen-size bed, walk-in wardrobe, en-suite bathroom, air conditioning
 - Bedroom 2: Twin beds
-

Living Area

- Open-plan living room and kitchen
 - L-shaped sofa
 - Flat-screen TV
 - Dining table for six
 - Balcony
-

Kitchen

- Well-equipped kitchen
- Coffee maker
- Cooking hob with oven
- Electric kettle and toaster
- Fridge and freezer
- Dishwasher



Home Entertainment

- Cable or Satellite TV
 - DVD Player
 - Flat-screen TV
 - Internet connection
-

Additional Amenities

- Washer and dryer
 - Bedding and towels included
 - Complimentary soap/shampoo/conditioner
 - Heated guest rooms
 - Smoke detectors
-

Outdoor Space

- Small private balcony with table and chairs
-

General

- Free high-speed Wi-Fi
 - Air conditioning
 - Hair dryer
 - Cleaning products
 - Iron and ironing board
-

House Rules

- No smoking inside the property
- No pets
- No parties or events
- Lead guest must be at least 25 years old



Use of Amenities

- This home is not suitable for children under 8 years old
- Passing trains can be heard from the bedrooms when windows are open during summer; light sleepers should take note

