

📍 Courchevel

Courchevel 164

🛏️ 2 🚿 2 👥 4 📏 50 sq.mt



Key Features

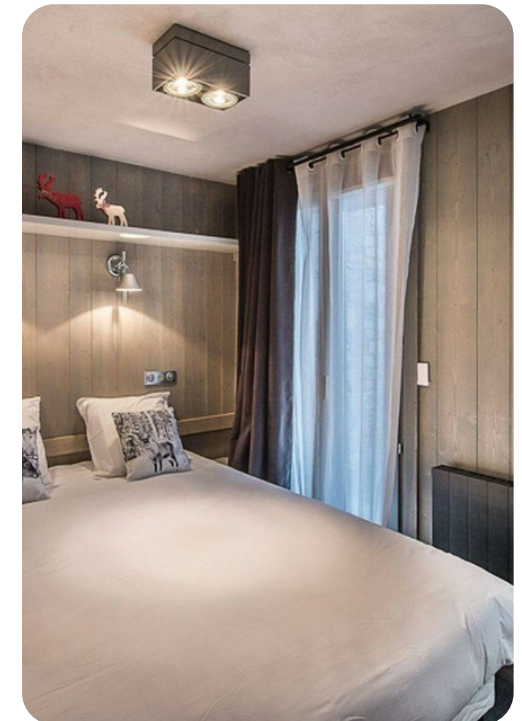
- 2 bedrooms
- 2 bathrooms
- Sleeps 4 guests
- 50 sq. ft.
- Open-plan living and dining area
- Fully-equipped kitchen
- Balcony with panoramic mountain and resort views
- Boots heater
- Elevator access
- Safety deposit box
- Ski locker
- Near ski school

Bedrooms

- Bedroom 1: Double bed
- Bedroom 2: Bunk bed (twin/twin)

Living Area

- Open-plan living and dining area
- Dining table and seating in lounge area
- Flat-screen TV and DVD player in the lounge
- Fully-equipped kitchen
- Access to balcony with alpine views



Kitchen Amenities

- Ceramic hobs
- Coffee machine
- Dishwasher
- Fondue appliance
- Freezer
- Fridge
- Kettle
- Kitchen exhaust hood
- Microwave
- Nespresso coffee machine
- Oven
- Raclette machine
- Toaster
- Vacuum



Outdoor Area

- Balcony with panoramic mountain and resort views

Home Entertainment

- Flat-screen TVs in living area
- DVD and Blue Ray players
- Russian and Arabic channels
- International channels

General

- Complimentary wifi
- Bedding and towels included
- Boots heater
- Elevator access
- Safety deposit box
- Ski locker
- Near ski school



Laundry Facilities

- Iron and Ironing board
-

Staff and Services (Included)

- Reception in agency
 - Beds made before arrival
 - End of stay cleaning
 - Household and bath linen
-

Staff and Services (Additional cost)

- Scheduled cleaning on request
 - Baby cot and high chair
-

Skiing Information

- Distance from the center : 0 m
- Distance from ski lift : 60 m
- Closest ski slope : Front de Neige / Snow Front
- Distance from the slopes : 60 m
- Distance to ski school : 60 m
- Closest ski lift : Front de Neige / Snow Front

Please note: After payment is completed, the main guest must provide a **valid ID, proof of address, and a completed client information form** to finalise the booking.