

Telluride

Telluride 1

🛏️ 1 🪑 1 👥 4



Key Features

- 1 bedroom
- 1 bathroom
- Sleeps 4
- Located steps from ski lifts
- Amazing views of Ajax Peak
- Complimentary Wi-Fi
- Free parking
- Upgraded finishes and modern touches

Bedroom

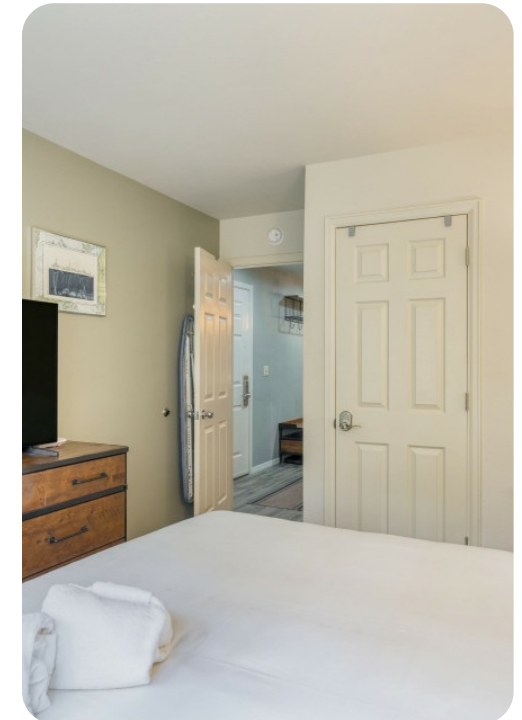
- Primary bedroom with California King bed
- Flat-screen TV
- Closet for storage

Living Area

- Open-plan living area
- Wall-to-wall windows
- Access to back porch
- Large flatscreen TV with Roku
- Sleeper sofa
- Modern tiled electric fireplace
- Dining area with breakfast bar seating for 4

Kitchen

- Granite countertops
- Stainless steel appliances
- Coffee maker and complimentary tea & coffee
- Toaster and microwave
- Basic spices provided



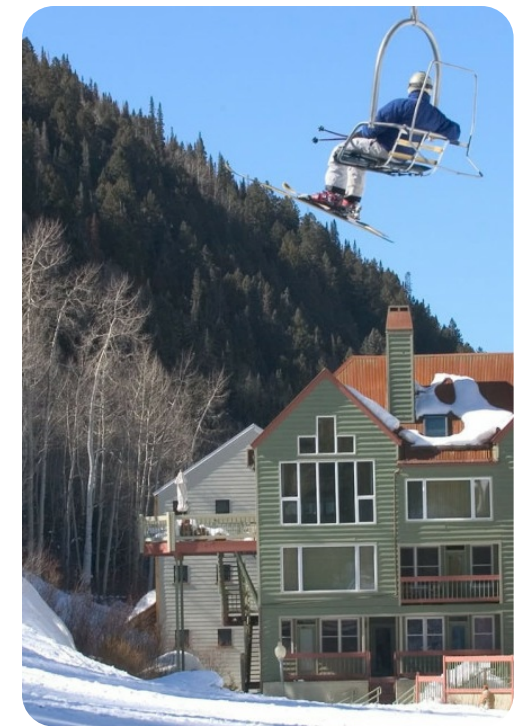
Bathroom

- Modern remodeled step-in shower
- Single vanity



Amenities

- Washer and dryer
- Ceiling fans
- Bedding and towels included
- Board games/puzzles



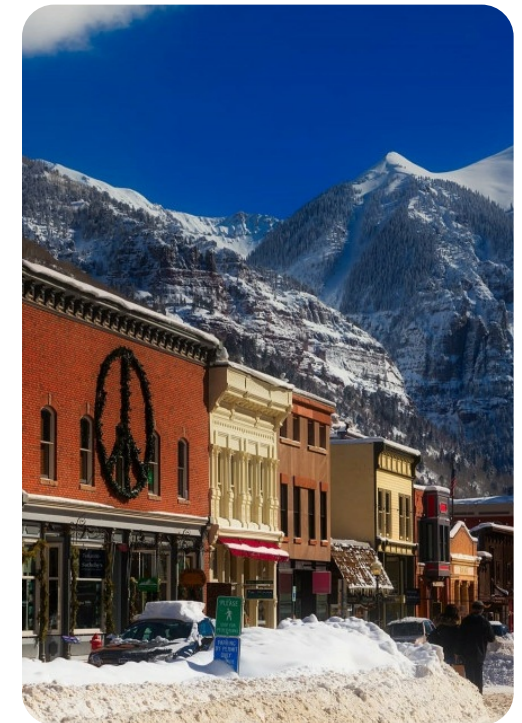
General

- Fireplace
- Complimentary Wi-Fi
- Free parking
- Child-friendly amenities available upon request
- Smoke detectors and carbon monoxide detector
- Essentials provided (towels, pillows, bed linen, soap, toilet paper)
- Cleaning products and laundry detergent available



Location Highlights

- Easy walk to historic downtown Telluride
- Access to trails on the Valley Floor
- Proximity to Lift #7 for skiing/snowboarding



House Rules

- Smoking is not permitted on the property. Violation results in a \$300 fee and forfeiture of the security deposit.
- Pets are not allowed. A \$500 penalty applies for undisclosed pets.
- Quiet hours are enforced from 9 pm to 8 am, with potential fines up to \$10,000 for noise ordinance violations.
- Events or parties require prior approval and may incur additional fees; unauthorized events will result in fines.

Use of Amenities

- Access to a communal coin-operated laundry room is available.
- A bike rack is provided for guest use outside the building.
- The property does not feature air conditioning.
- Climbing stairs is necessary for entering the home.

General Considerations

- Construction activities may occur during the summer with hours between 8 am and 7 pm.
- Certain services and amenities may be unavailable during Telluride's off-season in spring and fall.
- Vendors maintaining the property may not always adhere to CDC PPE guidelines, and access should be denied if standards are not met.

STR Permit No. 00411

